



GreenClad™ Insulated Façade System

A reinforced lightweight insulated cladding system for use on exterior walls of Residential, Industrial and Commercial buildings.



**Certificate of Conformity - Complies with the
National Construction Code - Building Code of
Australia**



GreenClad™ System Attributes

- Structure Stability
- Thermal Insulation
- Weatherproofing
- Decorative Finish



GreenClad™ Insulated Façade System

GreenClad™ Insulated Façade System / (EIFS) Wall Cladding System

It is constructed from “M Grade” expanded polystyrene (EPS) moulded panels directly anchored to wall frame, coated and reinforced with an exterior GreenClad Coating System to give an exterior wall having a durable structure and weatherproof property.

GreenClad Direct Fix System has two panel options;

OPTION 1: Virgin EPS panel

1a. Virgin Plain EPS panel , 1b. Virgin Vented EPS panel (panel with strips/groves on one side),

OPTION 2: Pre-Rendered EPS panel

(Pre-Rendered panel are factory coated with polymer-modified render and alkaline-resistant fibreglass mesh, ready to be anchored to frame and thereafter coated with only mesh on joints and not entire panel)

GreenClad™ Direct Fix System Application Summary

GreenClad™ panel are quickly and easily installed on timber or steel framed buildings as follows;

Panel Option 1. Virgin Plain / Vented EPS Panel System specifications

Virgin Plain /Vented panel are used in this system, panels are fastened and fixed directly on to timber or steel framed building having a Weatherproof Breathable Wall Wrap (Sarking) in between. Starter Channel Bead is fixed on to the bottom frame in required size. The panels are installed horizontally, and fastened directly into the studs using screws and plastic washers. The Panel joints are then sealed with PU Foam Adhesive, Corner angle beads are fixed and an Adhesive fibre glass mesh is stuck across the entire panel surface or embedded into the dry patch render and the panels are rendered and finished as per the GreenClad™ coating system consisting of two coats of polymeric GreenClad render (base coat) and one coat of acrylic texture coat having a minimum coating thickness of 6mm.

Panel Option 2. Pre-Rendered EPS Panel System specifications

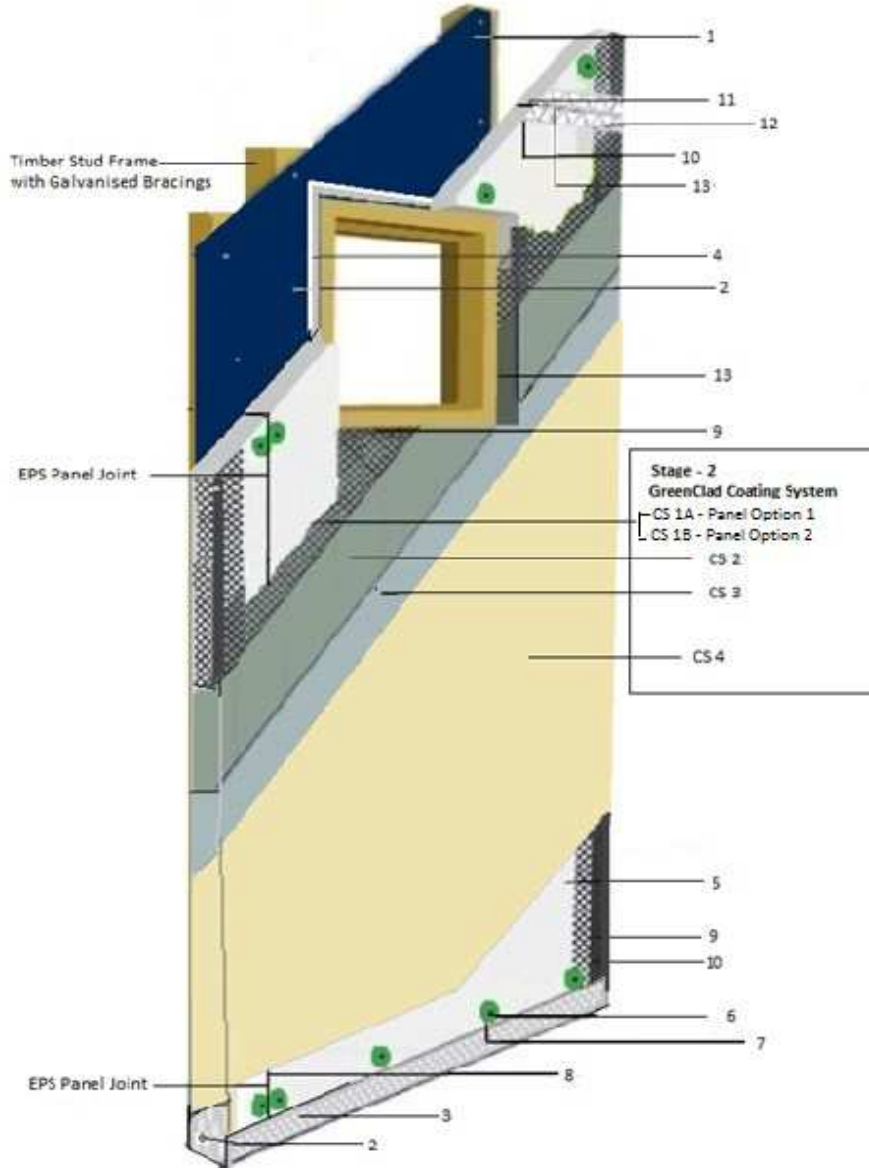
Pre-Rendered EPS panel is used in this system, panels are fixed directly on to the timber or steel framed building having a Weatherproof Breathable wall Wrap (Sarking) in between. Starter Channel Bead is fixed on to the frame in required size. The panels are installed horizontally, and fastened directly into the studs using screws and plastic washers. The Panel joints are sealed with PU Foam Adhesive, Corner angle beads are fixed and a 200mm fibreglass mesh is placed over panel joints only, the panels is rendered and finished as per the GreenClad™ coating system consisting of two coats of polymeric GreenClad render (base coat) and one coat of acrylic texture coat having a minimum coating thickness of 6mm.



Easy to Install

GreenClad™ Cladding System is easy to install. Its lightweight, rigid construction enables it to be easily transported, unloaded and maneuvered onto any building site. This contributes to fast construction times and reduced construction costs.

GreenClad™ System Overview



Contents

NOTE: All GreenClad System products must be installed in accordance with the Greenclad installation manual

Installation

1. Breathable Wall Wrap, 2. Nails/Clouts, 3. Starter Channel Bead, 4. Flashing Tape, 5. GreenClad EPS panel, 6. Panel Fixing screws, 7. Panel Fixing washers, 8. PU Foam Adhesive, 9. Corner angle bead, 10. Liquid nail /Clouts, 12. Expansion joint trim, 13. PU Sealant

GreenClad™ Coating System

Panel Option 1. CS1A - Alkaline Resistance Fibre Glass Mesh Stuck (Adhesive 10x10mm) / Embedded (Non-Adhesive 5x5mm)

Panel Option 2. CS1B - Alkali Resistance Fibre Glass Mesh Embedded over panel joint (200mm)

CS2 & CS3 - GreenClad Render (Painttex Dry Patch), CS4 - GreenClad Texture (Painttex Acrylic Texture)

Before application please refer to the GreenClad Insulated Façade System Technical & Installation Manual

GreenClad™ Insulated Façade System

GreenClad™ EPS Panel Standard Sizes, Area and Thickness	
Size 1 - 1.2m x 2.4m Area - 2.88m ²	50mm, 75mm, 100mm
Size 2 - 1.2m x 4.8m Area - 5.76m ²	75mm, 100mm

CODEMARK™

Certificate of Conformity
This is to certify compliance of
GreenClad™ (EIFS) Insulated Façade System

Product Purpose, Use and Application

- Certified as an exterior cladding system used for use in Residential, Industrial and Commercial Building applications)
- For use on buildings of Type C construction or Class 1 or 10 only where the limitations of housing geometry (8.5m height) applies in accordance with AS 4055-2012 Wind loads for housing.
- For use in non-cyclonic wind regions N1, N2, N3, N4 and N5.
- For use in cyclonic wind regions C1 and C2.

Complies with the National Construction Code – Building Code of Australia 2016

Volume One

- A0.2(a) Compliance with the Performance Requirements through a Performance Solution.
- BP 1.1(b)(ii) Wind actions.
- FP 1.4. Damp and Weatherproofing.
- Contributes to JP1 – Energy Efficiency.

Volume Two

- 1.0.2(c) Compliance with the Performance Requirements through a Performance Solution.
- P2.1.1 – Structural stability and resistance to actions (a), (b) & (c), as applicable to nominal bracing lateral wind loading and fastening pull outs.
- P2.2.2 - Weatherproofing.
- Contributes to P2.0.1 Energy Efficiency.

Certificate Holder

Painttex Pty Ltd
ABN: 55134179310
Unit 4, 10-12 South Link Road
Dandenong South, VIC 3175
Ph: 03 97694044
W: www.painttex.com.au

Certification Body

CertMark

14/9/2015 14/9/2018 CMA-CM40157-101-R01

For further information on GreenClad System, Purchase of GreenClad System Products and Technical / Installation Manual contact Enviroclad on 1300 003 009

Codemark certification achieved using Enviroclad EPS and Paintex Render System



Environmentally friendly and sustainable building and construction products
Call: 1300 003 009 E: sales@eclad.com.au W: www.eclad.com.au